

Panfrost

Open Source Meets Arm GPUs



COLLABORA

Open First



COLLABORA

**Robert
Foss**

@memcpy_io

Open First

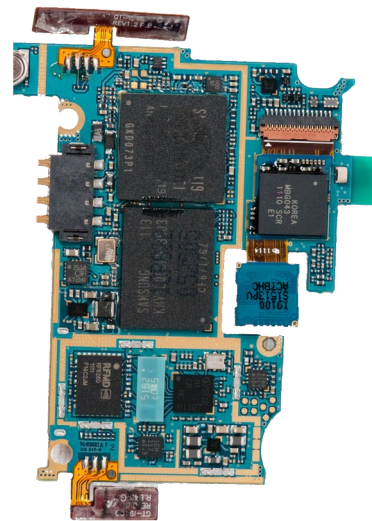


Hardware

Architectures

Utgard

- Mali 2/4XX GPUs
- Launched 2007
- OpenGL ES 2.0
- Found in Samsung S2



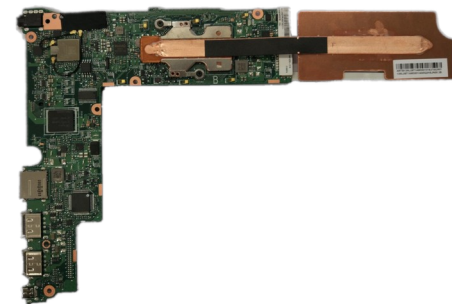
COLLABORA

Open First

Architectures

Midgard

- Mali TXXX GPUs
- Launched 2012
- OpenGL ES 3.2
- OpenCL 1.2
- Vulkan 1.1
- Found in Asus C100



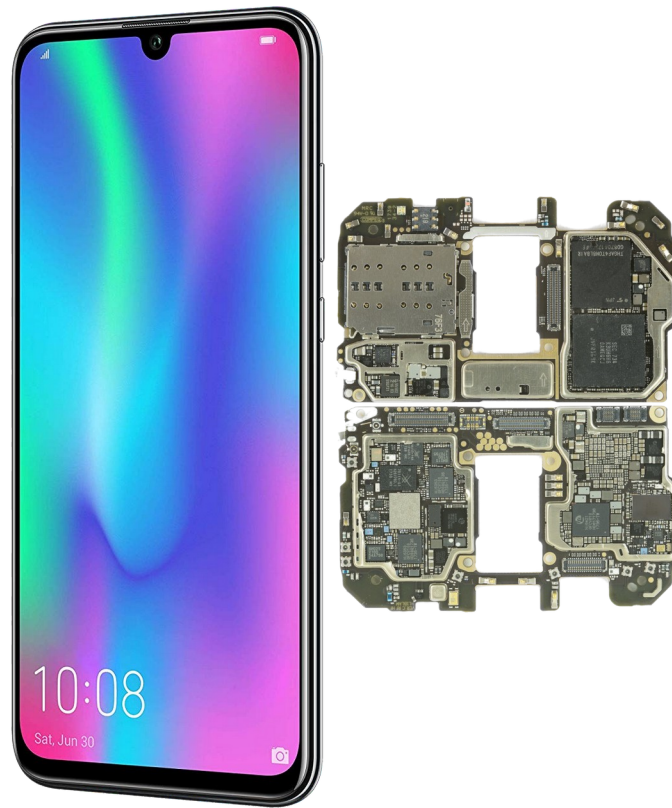
COLLABORA

Open First

Architectures

Bifrost

- Mali GXX GPUs
- Launched 2016
- OpenGL ES 3.2
- OpenCL 2.0
- Vulkan 1.1
- Found in Huawei Honor 10



Architectures

Valhall

- Mali G77 GPU
- Launched 2019
- OpenGL ES 3.2
- OpenCL 2.0
- Vulkan 1.1
- Found in ???

???



COLLABORA

Open First

Drivers

Drivers

Proprietary

- Supports all GPUs



COLLABORA

Open First

Drivers

Proprietary

- Supports all GPUs
- Proprietary userspace driver



COLLABORA

Open First

Drivers

Proprietary

- Supports all GPUs
- Proprietary userspace driver
- Open Source kernel driver



COLLABORA

Open First

Drivers

Proprietary

- Supports all GPUs
- Proprietary userspace driver
- Open Source kernel driver
- Kernel driver not upstreamable



COLLABORA

Open First

Drivers

Lima

- Supports Utgard



COLLABORA

Open First

Drivers

Lima

- Supports Utgard
- Open Source userspace driver



COLLABORA

Open First

Drivers

Lima

- Supports Utgard
- Open Source userspace driver
- Open Source kernel driver



COLLABORA

Open First

Drivers

Lima

- Supports Utgard
- Open Source userspace driver
- Open Source kernel driver
- Both upstreamed to Kernel & Mesa



COLLABORA

Open First

Drivers

Panfrost

- Supports Midgard



COLLABORA

Open First

Drivers

Panfrost

- Supports Midgard
- Targets adding Bifrost support



COLLABORA

Open First

Drivers

Panfrost

- Supports Midgard
- Targets adding Bifrost support
- Open Source userspace driver



COLLABORA

Open First

Drivers

Panfrost

- Supports Midgard
- Targets adding Bifrost support
- Open Source userspace driver
- Open Source kernel driver



COLLABORA

Open First

Drivers

Panfrost

- Supports Midgard
- Targets adding Bifrost support
- Open Source userspace driver
- Open Source kernel driver
- Both upstreamed to Kernel & Mesa

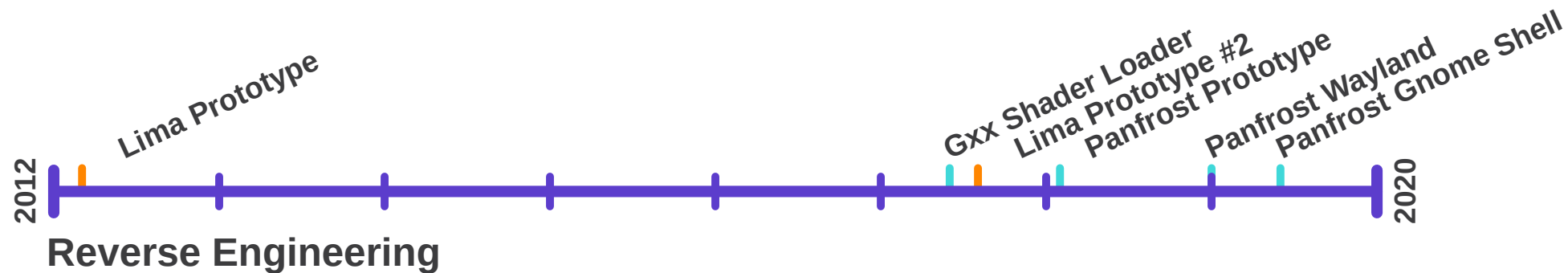


COLLABORA

Open First

History

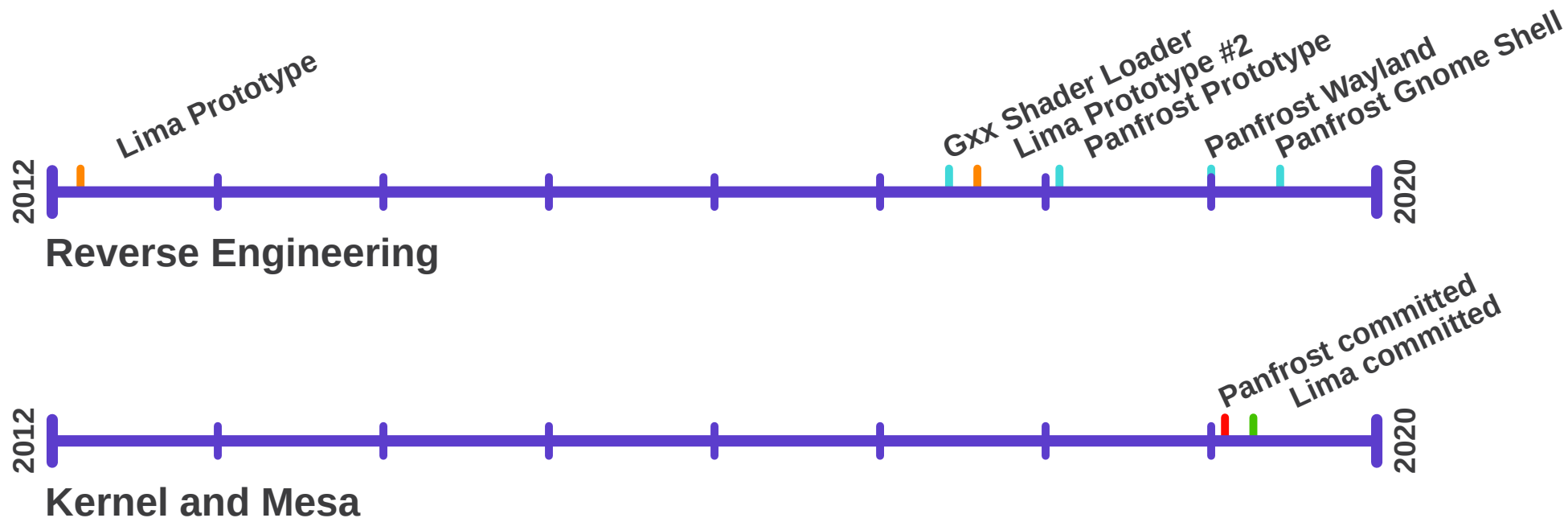
History



COLLABORA

Open First

History



COLLABORA

Open First

Demo

What Comes Next

What Comes Next

- Improved OpenGL support
 - Desktop OpenGL, OpenGL ES 3.X



What Comes Next

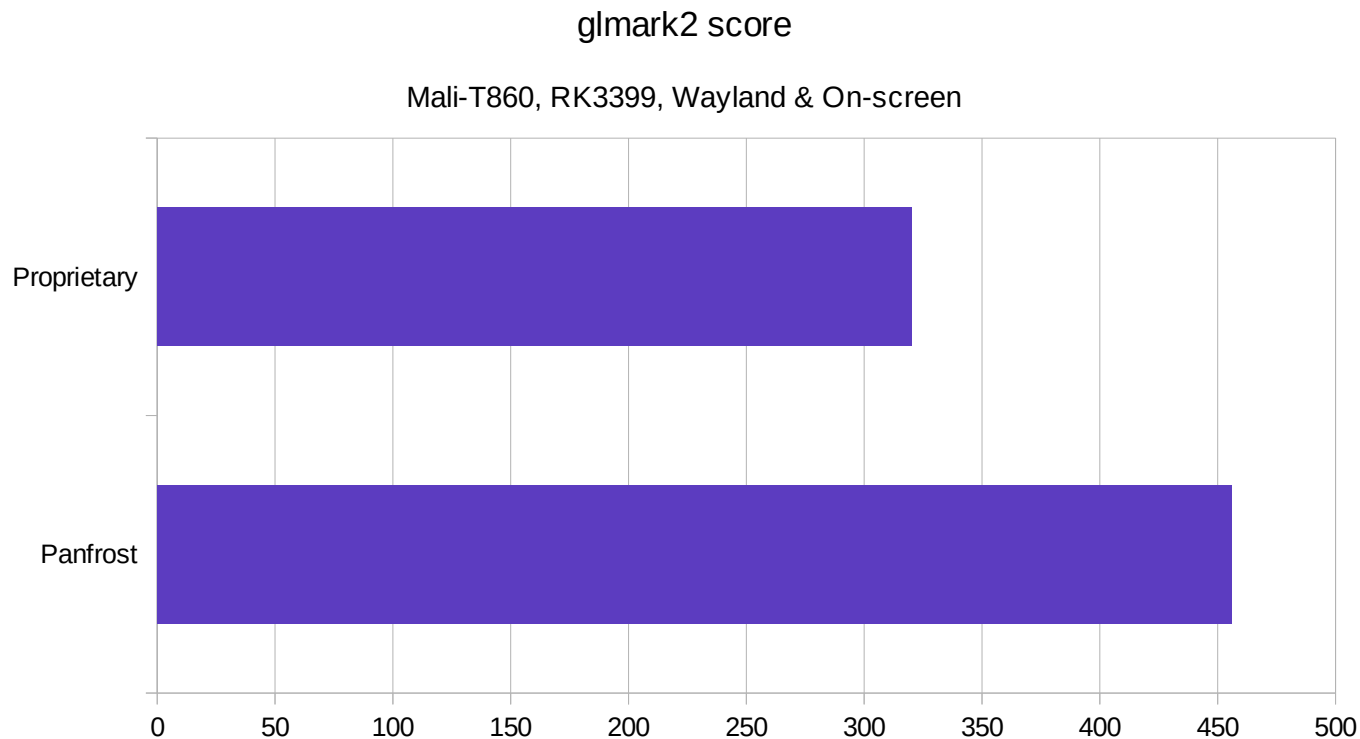
- Improved OpenGL support
- Wider hardware support
 - Currently Mali T860 best tested
 - More GPUs need enabling

What Comes Next

- Improved OpenGL support
- Wider hardware support
- Improved performance



What Comes Next



COLLABORA

Open First

What Comes Next

- Improved OpenGL support
- Wider hardware support
- Improved performance
 - Currently faster in *some* tests
 - Compiler intense tests often slower

What Comes Next

- Improved OpenGL support
- Wider hardware support
- Improved performance
- OpenCL

What Comes Next

- Improved OpenGL support
- Wider hardware support
- Improved performance
- OpenCL
- Vulkan

Why Open Source?

Why Open Source?

- Long-term support

Why Open Source?

- Long-term support
- High performance & conformance

Why Open Source?

- Long-term support
- High performance & conformance
- Much simpler debugging



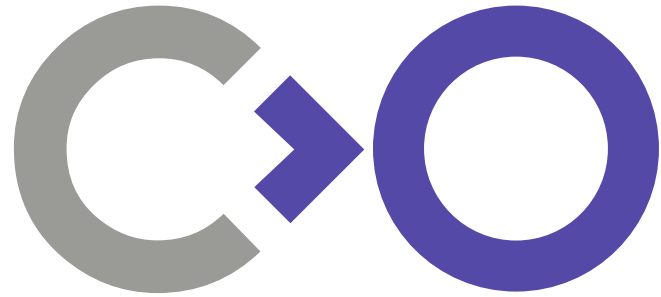
Why Open Source?

- Long-term support
- High performance & conformance
- Much simpler debugging
- Old hardware receives new features

Why Open Source?

- Long-term support
- High performance & conformance
- Much simpler debugging
- Old hardware receives new features
- No vendor lock-in





Thank you!



COLLABORA

Open First